



## **S21/S31 Offline Software V2.3.1 Release Notes (April 2019)**

### **System Requirements**

**S-Series Offline Editor is a 64-Bit application and will not work on a 32-Bit Operating system  
A minimum screen resolution of 1280x800 and 4GB RAM memory is recommended.**

**Please note that this application is intended for offline preparation of sessions and cannot be used to mirror a PC to a console for remote control purposes.**

**These notes should be read in conjunction with the latest S21/S31 User Guide which is available for download at:**

[http://www.digico.biz/docs/about/manuals\\_1.shtml](http://www.digico.biz/docs/about/manuals_1.shtml)

### **Installation**

The two installers (Windows and Mac versions) can be downloaded using the links below:

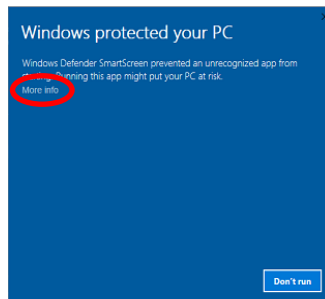
Windows – [www.digico.org/Digico\\_Offline/S\\_Series/S\\_Series\\_V2\\_3\\_1\\_Offline\\_Software\\_WIN.zip](http://www.digico.org/Digico_Offline/S_Series/S_Series_V2_3_1_Offline_Software_WIN.zip)

**NOTE: For Windows users - Please uninstall any existing versions of S-Series Offline software before installing V2.3.1**

Mac - [www.digico.org/Digico\\_Offline/S\\_Series/S\\_Series\\_V2\\_3\\_1\\_Offline\\_Software\\_MAC.zip](http://www.digico.org/Digico_Offline/S_Series/S_Series_V2_3_1_Offline_Software_MAC.zip)

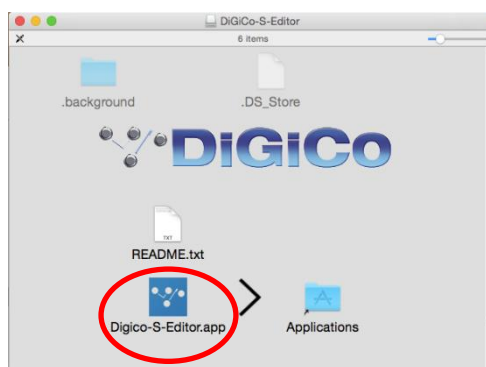
To install the software, the installer must be copied to a local location on the computer's hard drive. The installer can then be run and has simple steps to install the software.

DiGiCo S-Series Editor is a certified application although, until it reaches 3000 downloads, computers may register the application as from an unknown publisher. Computers with Windows Defender SmartScreen may show the following window.



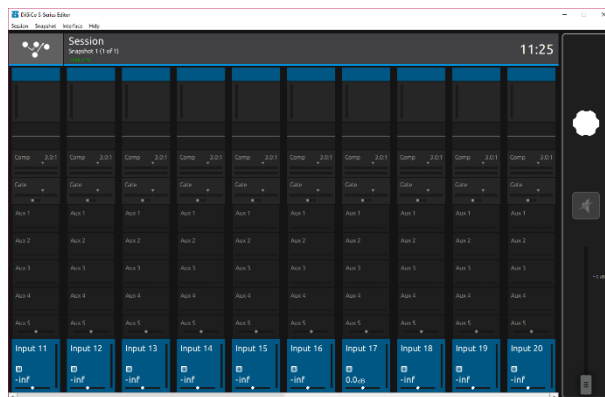
In this case, click 'More info' and a 'Run anyway' option will appear next to the 'Don't run' button at the bottom of the window. Click this new button and the installer will run normally.

If installing the Mac version, during the installation process, the following window will appear. It requires the user to drag the DiGiCo-S-Editor.app file into the applications folder to the right of it. There is also a README file that includes information about security, as the application may appear as from an unknown publisher at first. Once the file has been moved to the applications folder, the window can be closed. To run the application, open the applications folder in Finder and open the DiGiCo-S-Editor.app file.



## Offline Software Specific Features

The DiGiCo S-Series Editor has the same appearance as the software on the S-Series consoles. Although a minimum screen resolution of 1280x800 is recommended, the window is scalable and can be decreased to fit onto a 768-pixel height monitor. Display may be improved on a 768-pixel height screen by moving the taskbar to the side of the screen. This can be done on most PC computers by right clicking on the taskbar and unlocking it, then dragging it to the side of the screen.



In the routing page, DMI cards cannot be added to a session. However, a number of template sessions with DMI cards already added can be found in the ZIP file containing the installer. These session files are set up as follows:

1. [BNC D2-RACK 2. MADI BNC.session](#) - standard D2-Rack on a DMI MADI B in Slot 1 plus standard MADI 64 on DMI MADI B in Slot 2

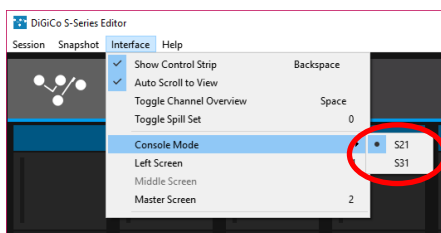
1. [CAT5 D2-RACK 2. MADI BNC.session](#) - standard D2-Rack on a DMI MADI C in Slot 1 plus standard MADI 64 on DMI MADI B in Slot 2

1. [CAT5 D-RACK 2.MADI BNC.session](#) - standard D-Rack on a DMI MADI C in Slot 1 plus standard MADI 64 on DMI MADI B in Slot 2

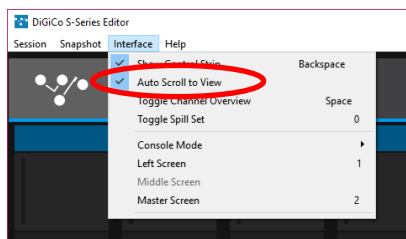
Since the DMI card is not actually present in the computer, the 'remove' button next to the card in routing pages is displayed. Clicking this will permanently remove the card from the session. The card can still be routed to if this button is visible. It is possible to create customised template sessions with different DMI cards in the console and saving them onto a computer for editing with the offline application. Sessions from consoles can be loaded in the offline software provided that they are either on a USB connected to the computer or saved to the computer itself. Sessions edited in the offline software can also be saved anywhere on the computer, or to an external USB device.

The same Offline Software can be used with both the S21 and S31 consoles.

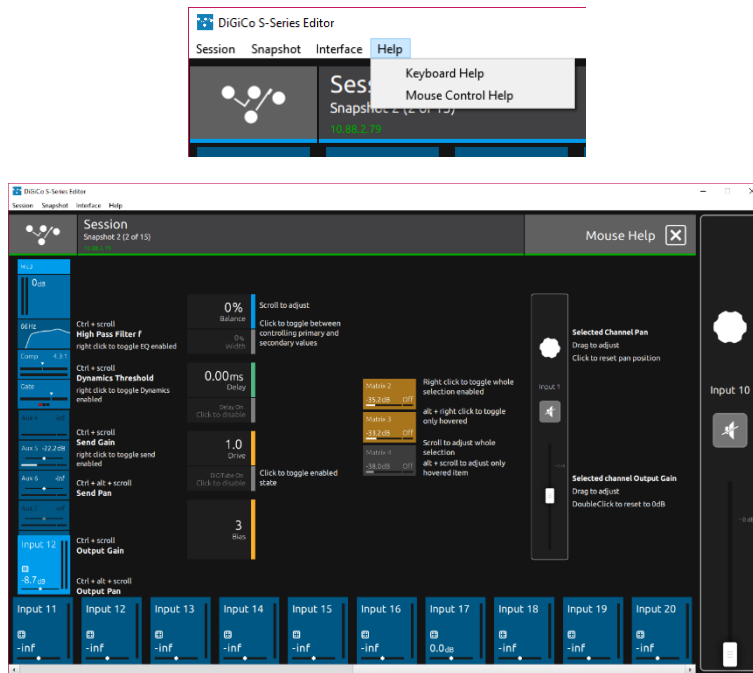
To change the mode from S21 to S31, open the **Interface Menu** from the menu bar, hover over **Console Mode** and select the desired console. This will rearrange the current banks to reflect the new number of screens on the console. For the bank placement to reflect the current console (i.e. CG bank on the right-hand screen for an S31 console) then a new session must be started. The application will always load in the same console state as it was left in before closing the application.



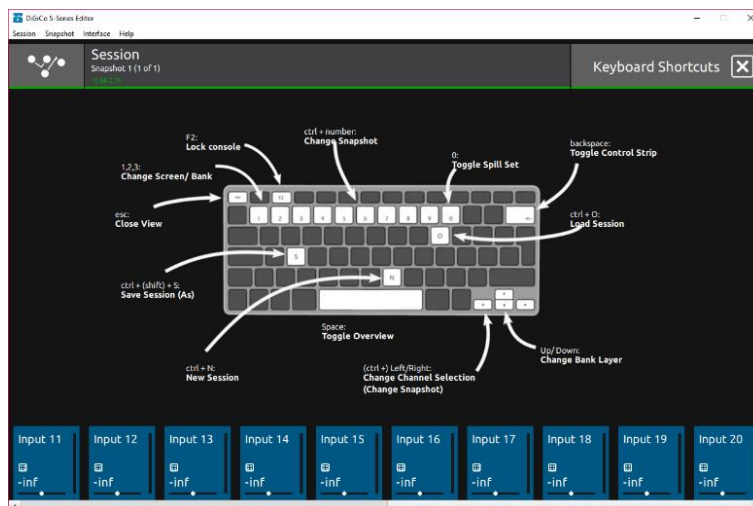
**Auto Scroll to View** is a function that can be used when the width of the application is not the full width of the selected console and all screens are not fully visible. If the right screen is not fully in view and something is done to open a menu, the application will automatically scroll to the right window when Auto Scroll to View is enabled. This option can be found under the Interface option on the menu bar.



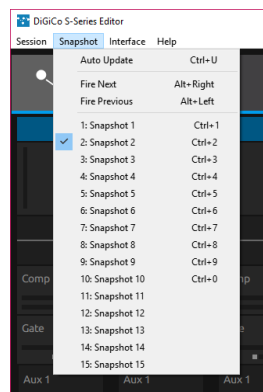
Although there are no encoders available in the offline software, all parameters can still be changed with a mouse or trackpad. All mouse commands can be found in the **'Mouse Control Help'** page, located under the **'Help' Menu**. On the Mac version, all instances of the ctrl button in mouse commands should be replaced with cmd (⌘). Most mouse commands use scrolling. The direction of scrolling may differ depending on mouse/trackpad preferences of the computer.



There are many keyboard shortcuts within the application which can be found in the **Keyboard Help** page. If using a Mac, ctrl should be replaced with cmd when using shortcuts.



An additional shortcut on both the Windows and Mac software that is not seen on the shortcuts page is ctrl (or cmd) + Q. This will quit the application and is equivalent of pressing the X in the top right corner of the window. On the Mac version, it is also possible to use cmd + [ or cmd + ] to fire previous and next snapshots respectively. This is alongside using cmd + left or cmd + right.



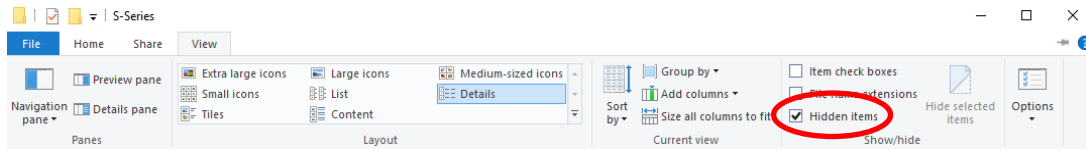
When there are multiple snapshots, it is possible to jump to a particular snapshot by pressing ctrl and the number of the desired snapshot. This only works for the first 10 snapshots in the session, with the 10th snapshot being accessed with ctrl + 0.

## **Troubleshooting**

If the application fails to start correctly, this may be due it trying to load a corrupted session. In this case, if closing and re-opening the application doesn't work, then the files inside the computer that the application is booting from must be cleared. These files can be found in the following location:

C:\Users\your\_username\AppData\Local\DiGiCo\S-Series

The main file in question is called '.autosave'. Delete this and try running the application again. There may also be a file called '.autosave.session-journal' which should also be deleted. In order to follow this path, hidden files must be shown. This option can be found under the view option in the File Explorer. Selecting it will show all hidden files and folders.



The equivalent on Mac can be done by going to Documents and pressing cmd + up. Show hidden files, and then delete the same files as above.

## **S21/31 Fixes in V2.3.1**

- Panner % value was not being displayed correctly.
- Master fader not working correctly if Disable Mute was active.
- Unit labels intermittently not being displayed.
- No response of Aux Send controls when being adjusted in Aux to Fader mode if done very quickly after assignment (the fix is new worksurface code V66).
- Compressor names overlapping title area.
- Crossfade & AMM global scope toggle not working correctly.
- Dynamics mode selector staying open after new session.